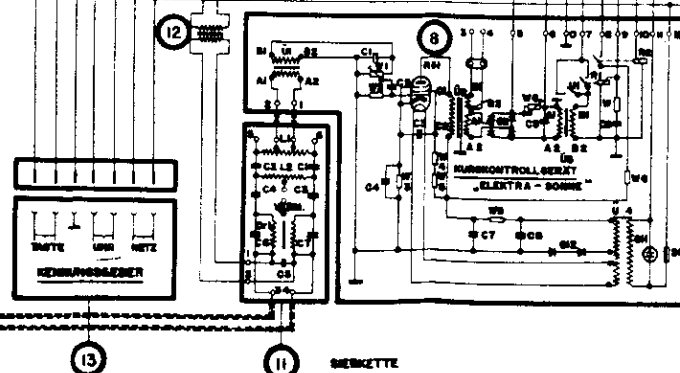
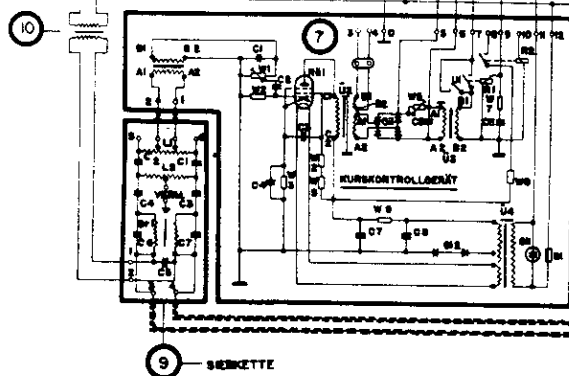
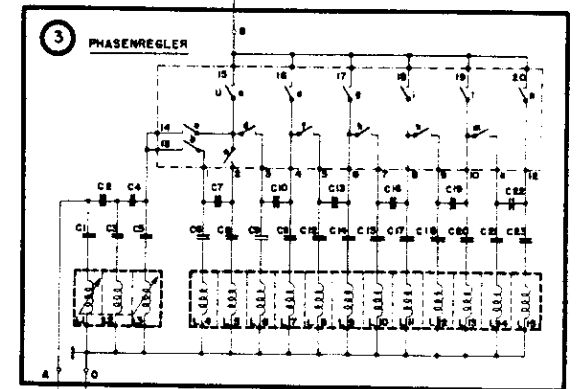
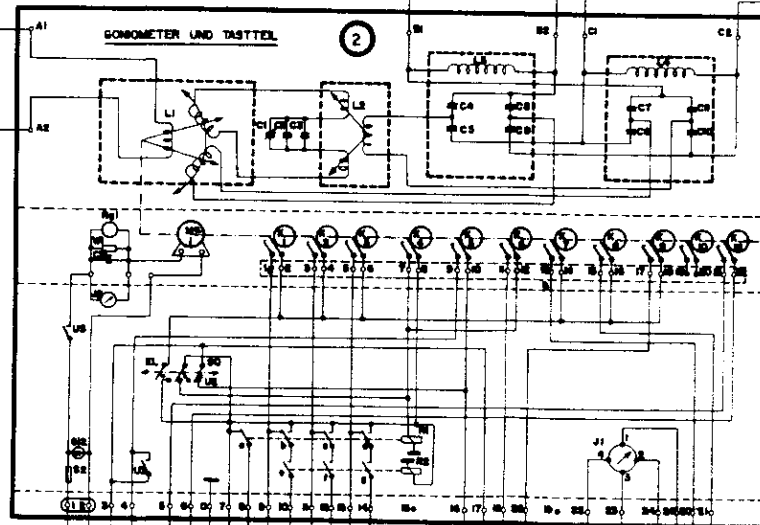
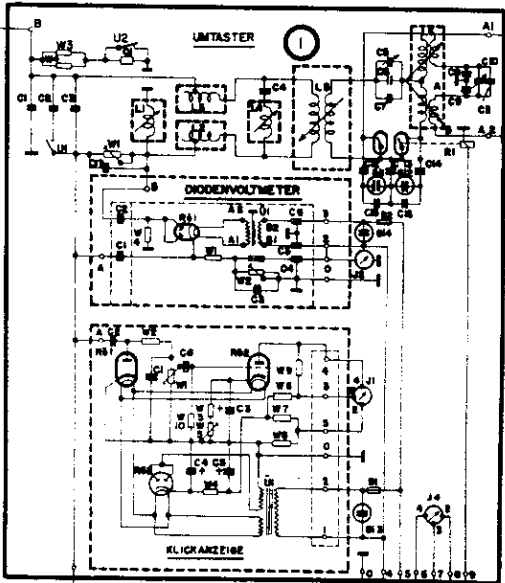
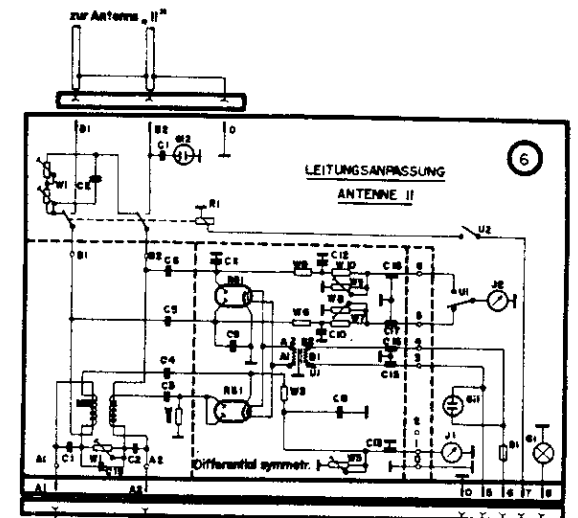
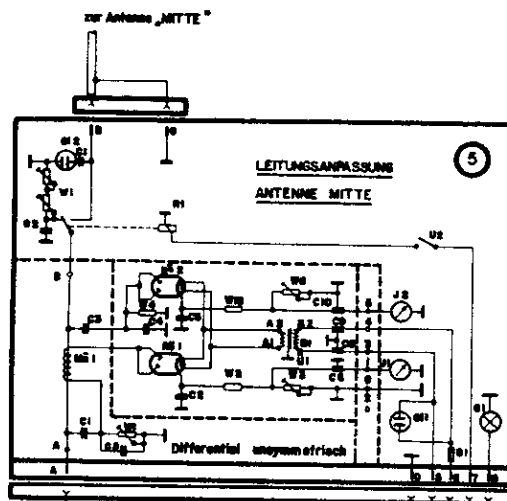
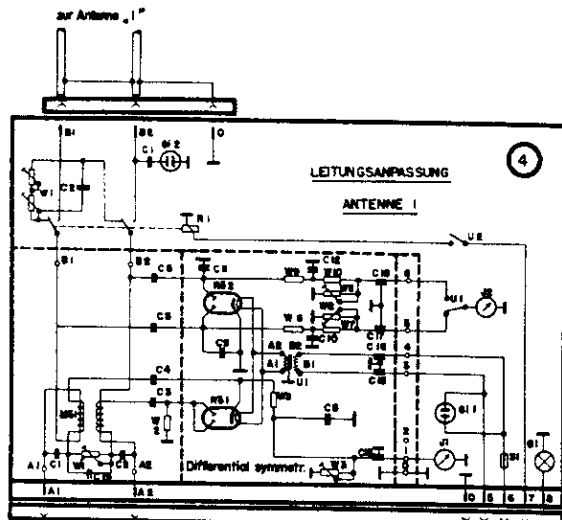


Gesamtanlage „ELEKTRA - SONNE“
(Schaltbild)



SONOMETER UND TASTTEL

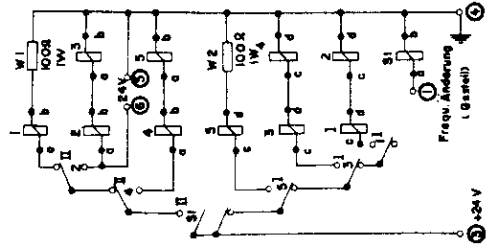
SCHALTER U1	a	b	c	d	e	f	g	h
hohe LEISTUNG	•	•	•	•	•	•	•	•
niedrige LEISTUNG	•	•	•	•	•	•	•	•

PHASENREGLER (grob)

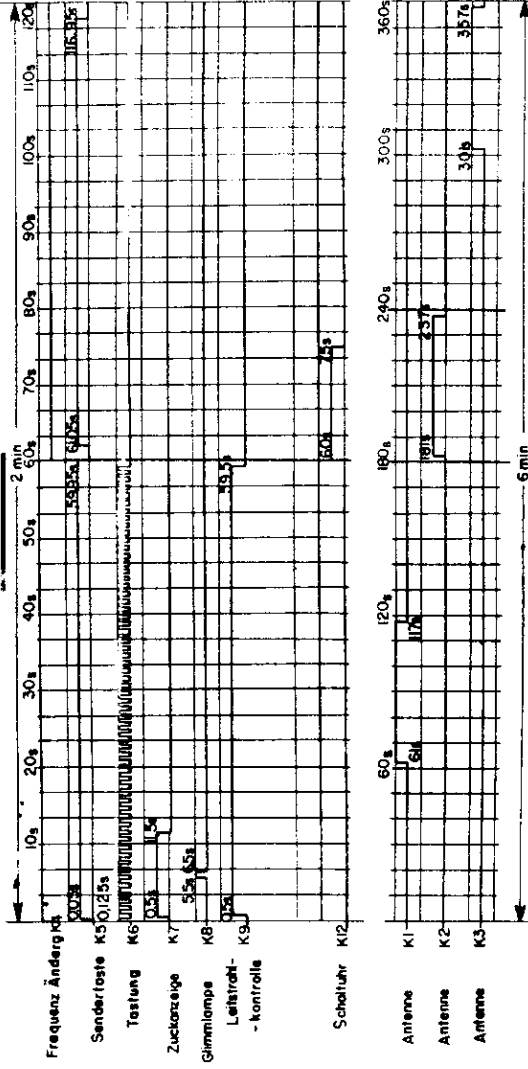
PHASEN SCHALTER SPERREINRICHTUNG	a	b	c	d	e	f	g	h	i	j	k	l	m	n	o
30° I	•	•	•	•	•	•	•	•	•	•	•	•	•	•	•
45° II	•	•	•	•	•	•	•	•	•	•	•	•	•	•	•
60° III	•	•	•	•	•	•	•	•	•	•	•	•	•	•	•
75° IV	•	•	•	•	•	•	•	•	•	•	•	•	•	•	•
90° V	•	•	•	•	•	•	•	•	•	•	•	•	•	•	•
105° VI	•	•	•	•	•	•	•	•	•	•	•	•	•	•	•
120° VII	•	•	•	•	•	•	•	•	•	•	•	•	•	•	•
135° VIII	•	•	•	•	•	•	•	•	•	•	•	•	•	•	•
150° IX	•	•	•	•	•	•	•	•	•	•	•	•	•	•	•
165° X	•	•	•	•	•	•	•	•	•	•	•	•	•	•	•
180° XI	•	•	•	•	•	•	•	•	•	•	•	•	•	•	•
180° XII	•	•	•	•	•	•	•	•	•	•	•	•	•	•	•

HF-GESTELL
(SCHALTPLAN)

Relaiskette

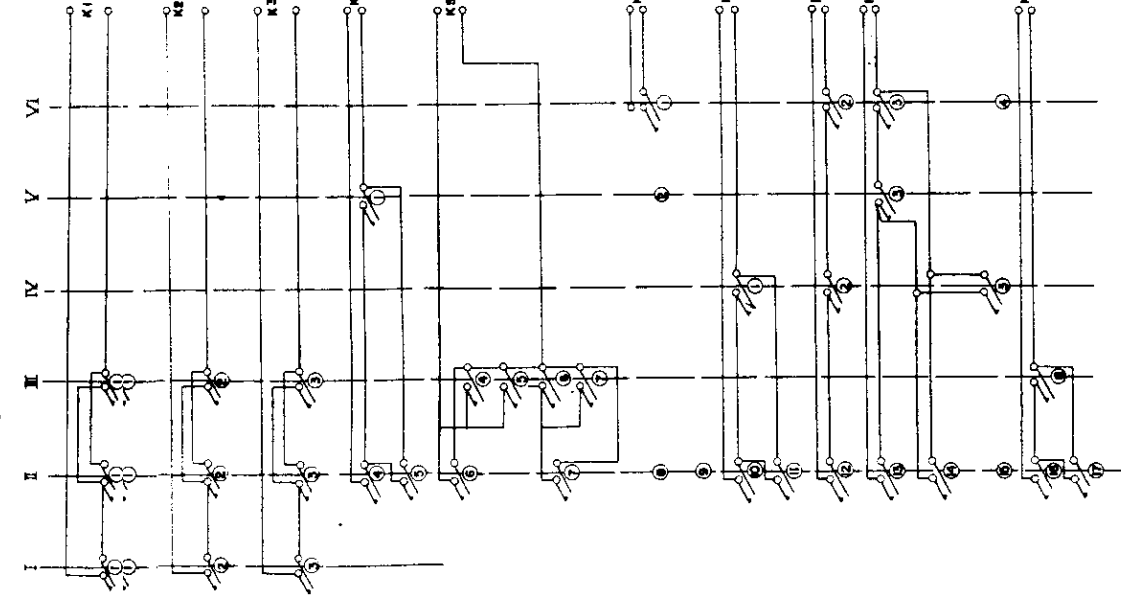


Tastdiagramm

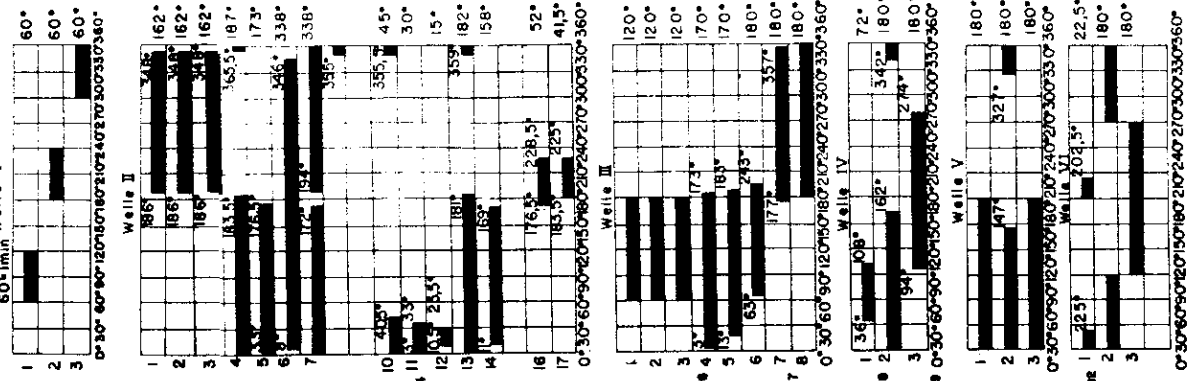


Tastung „Sonne“

Schaltung der Federsätze



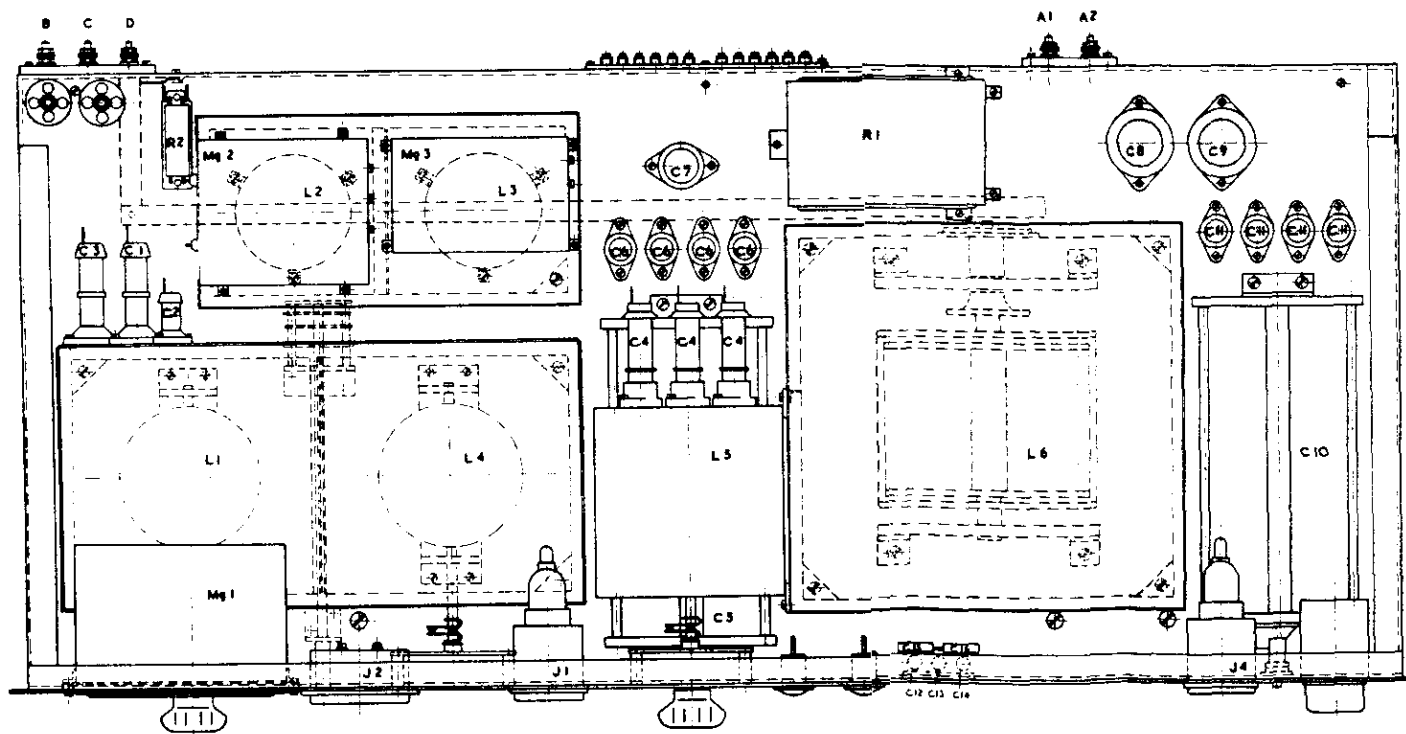
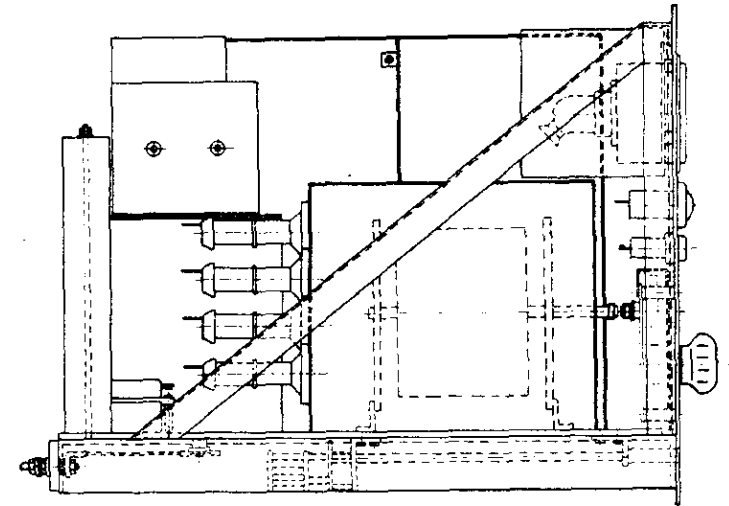
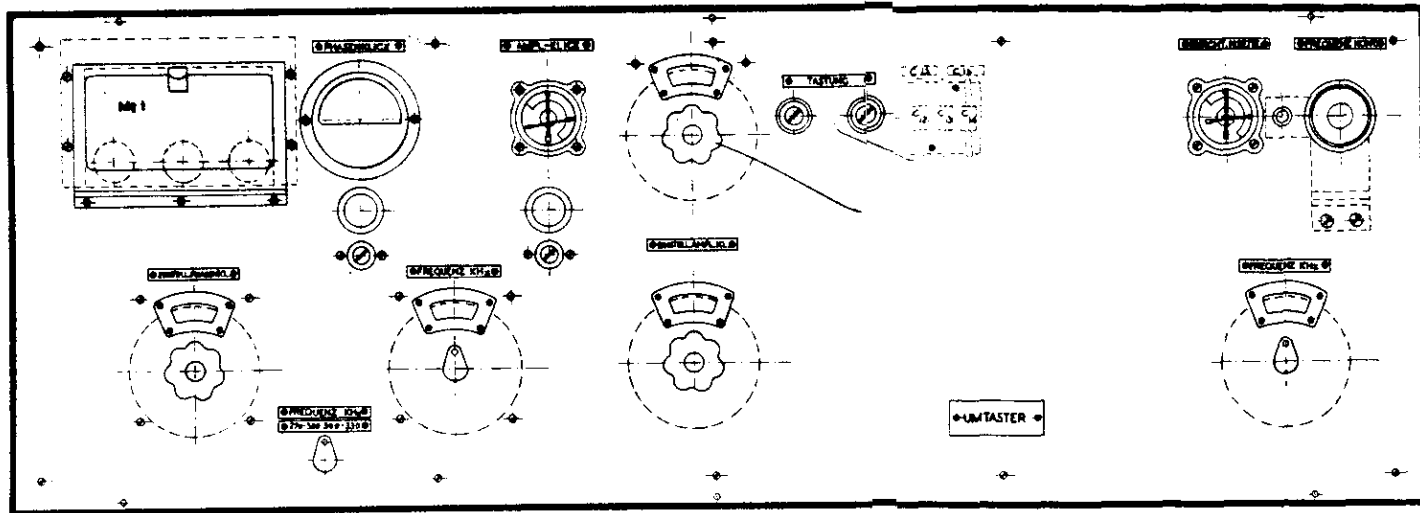
Abwicklung und Stellung der Nocken



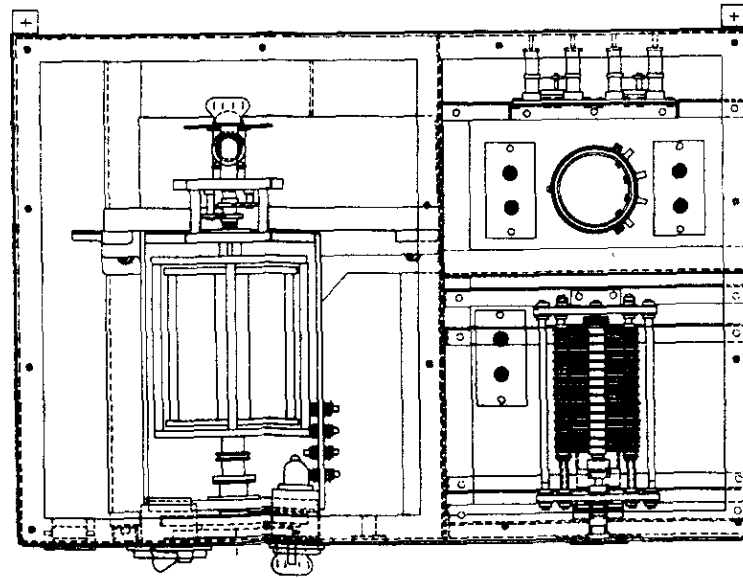
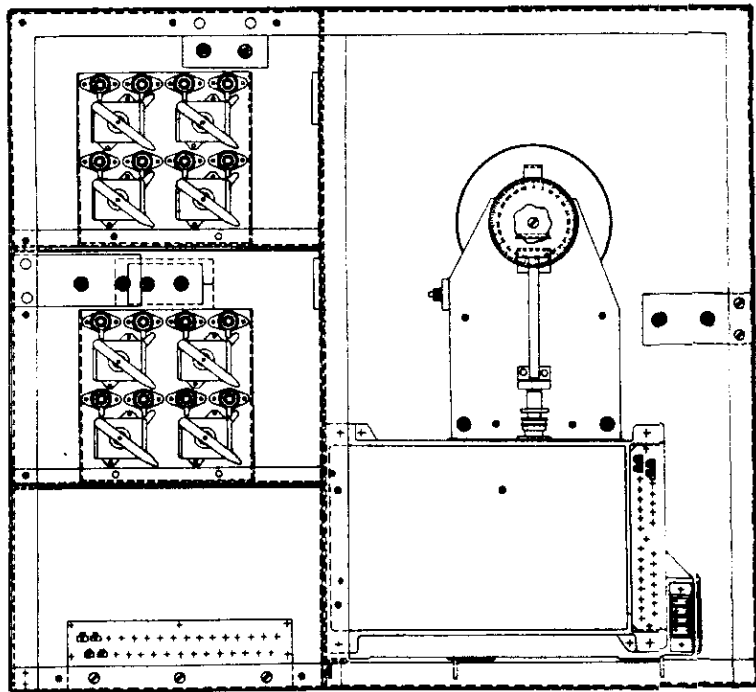
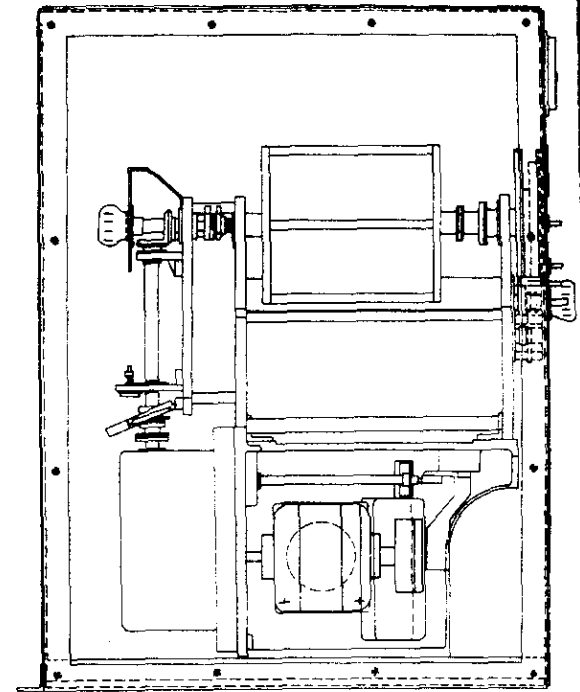
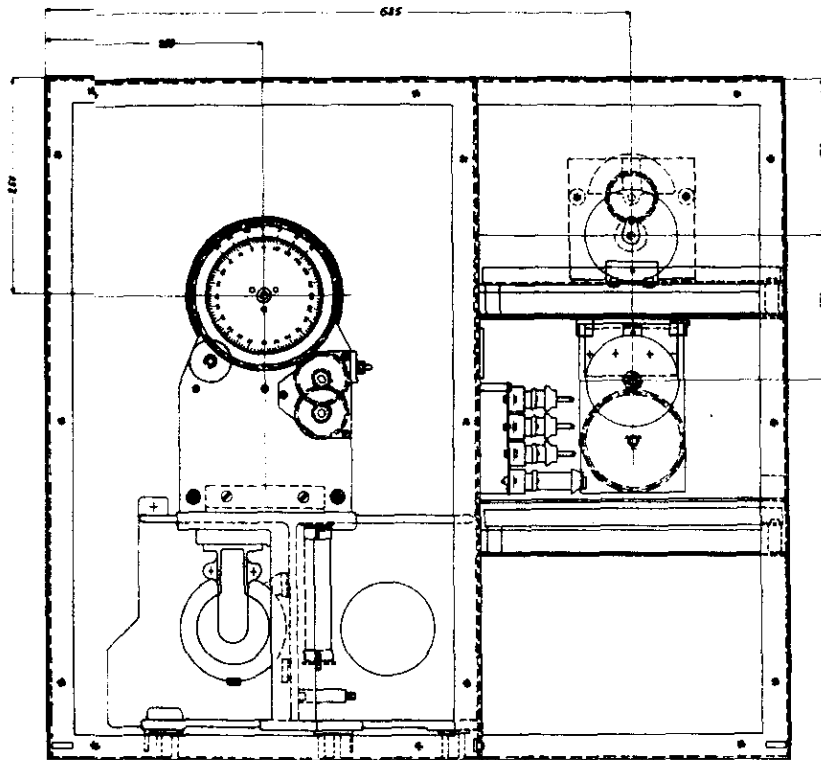
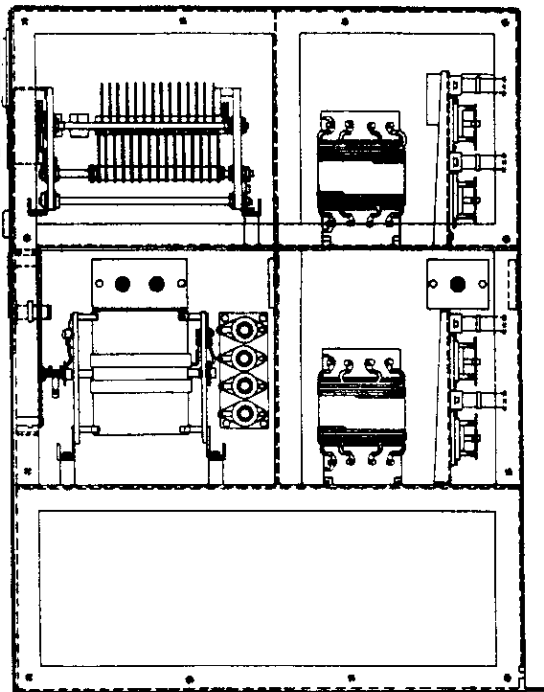
Bez.	Teil	rel.	50	1	II
Rel1	Teil rel	41K	16,04V	1	1
Rel3	Teil rel	41K	16,04V	2	2
Rel2	Teil rel	41K	16,04V	3	3
Rel2	Teil rel	41K	1,16V	3	3
Rel4	Teil rel	41K	1,16V	3	3
Rel5	Teil rel	41K	1,25V	3	3

Welle	Drehzahl - Min
I	1/6
II	1/2
III	10
IV	12
V	12,5
VI	30

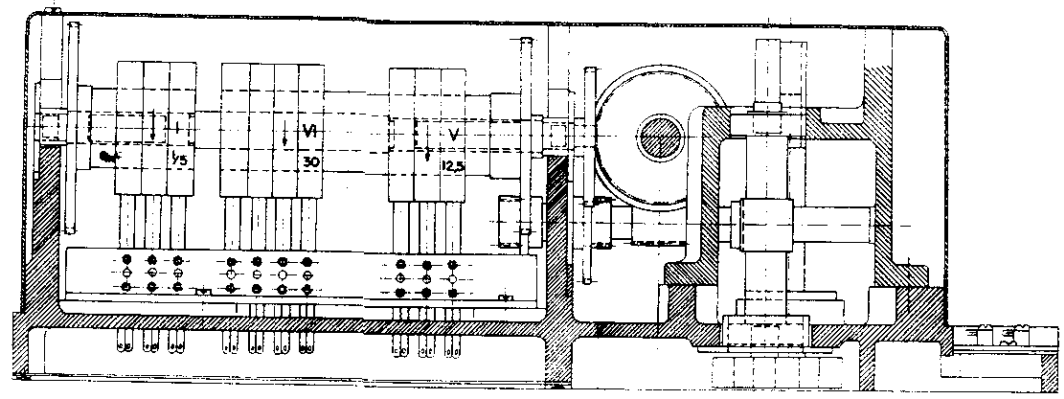
Tastdiagramm „SONNE“



UMTASTER

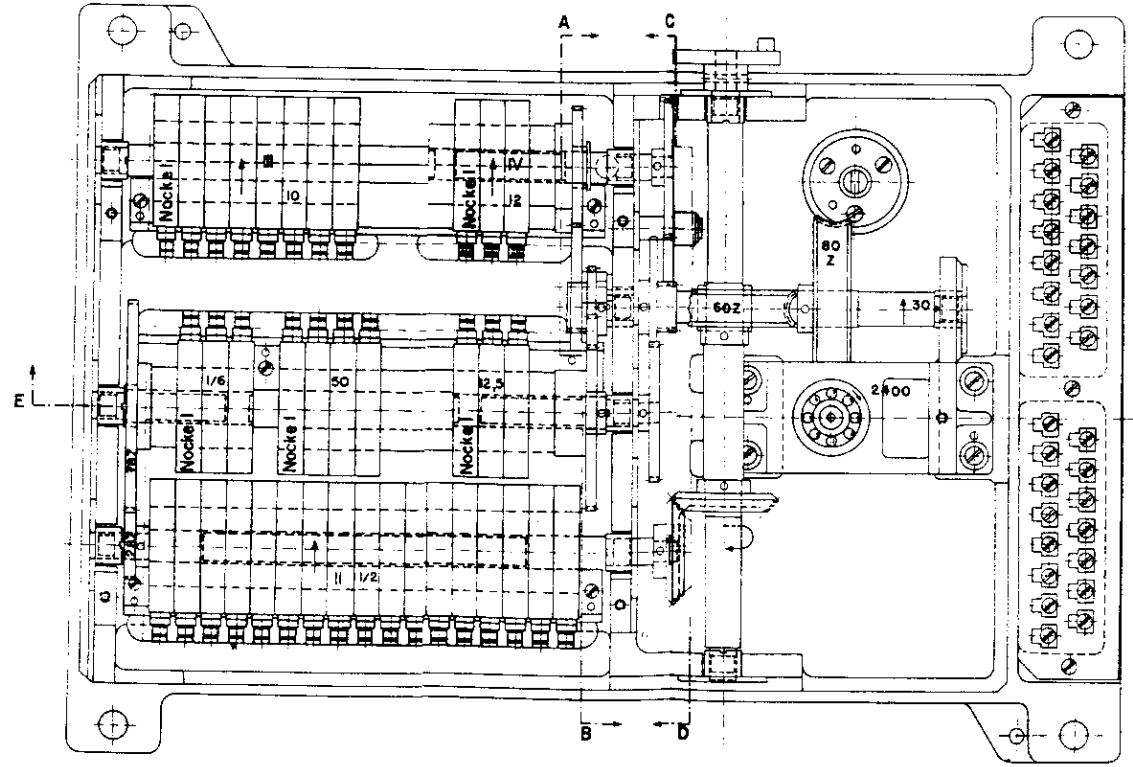
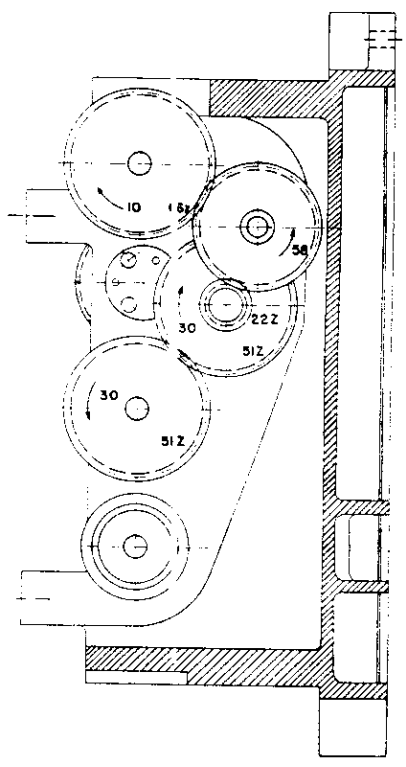


GONIOMETER UND TASTTEIL

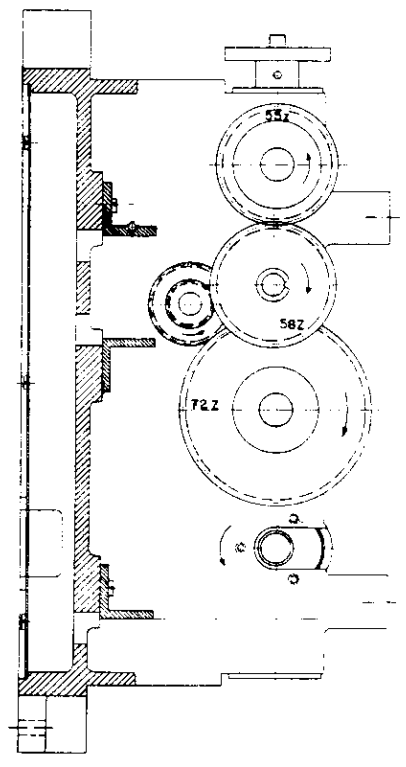


SCHNITT E-F

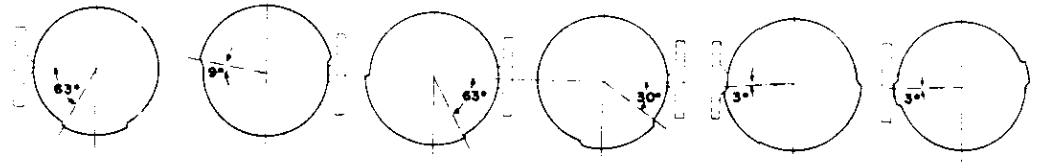
SCHNITT C-D



SCHNITT A-B



- Nockenwelle I
- Nockenwelle II
- Nockenwelle III
- Nockenwelle IV
- Nockenwelle V
- Nockenwelle VI



TASTGETRIEBE